

# **Agriculture and Food Processing**

---

**LIVESTOCK SECTOR**

A solid green horizontal bar at the bottom of the page.

# National Geographical conditions

❖ **Black soil amounts to around 75% of the overall territory**



❖ **Population 2,9 mil.**

❖ **Rural area population 52%**

❖ **32,3% of labor forces are employed in agriculture sector**

❖ **Total area – 3,38 mil. ha**

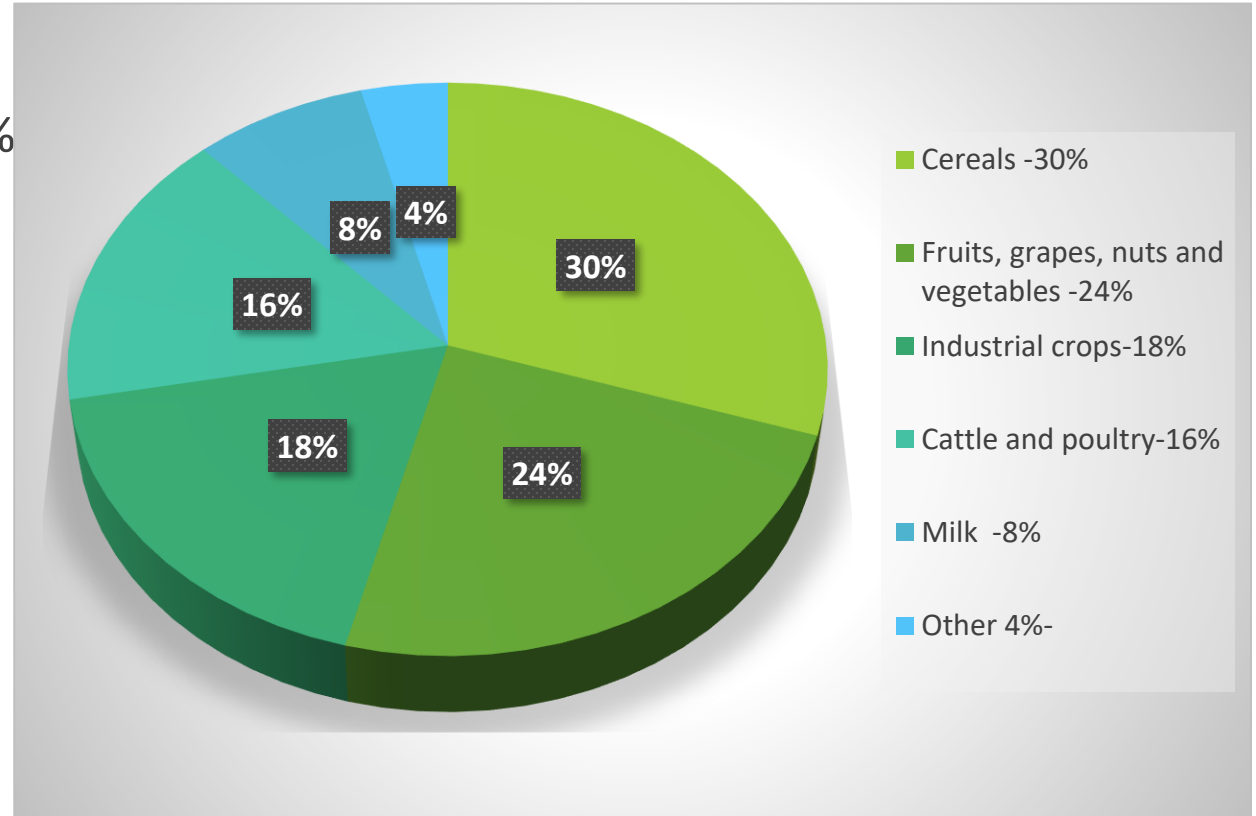
❖ **Agricultural land – 2,4 mil. ha**

❖ **Arable land – 1,67 mil. ha**



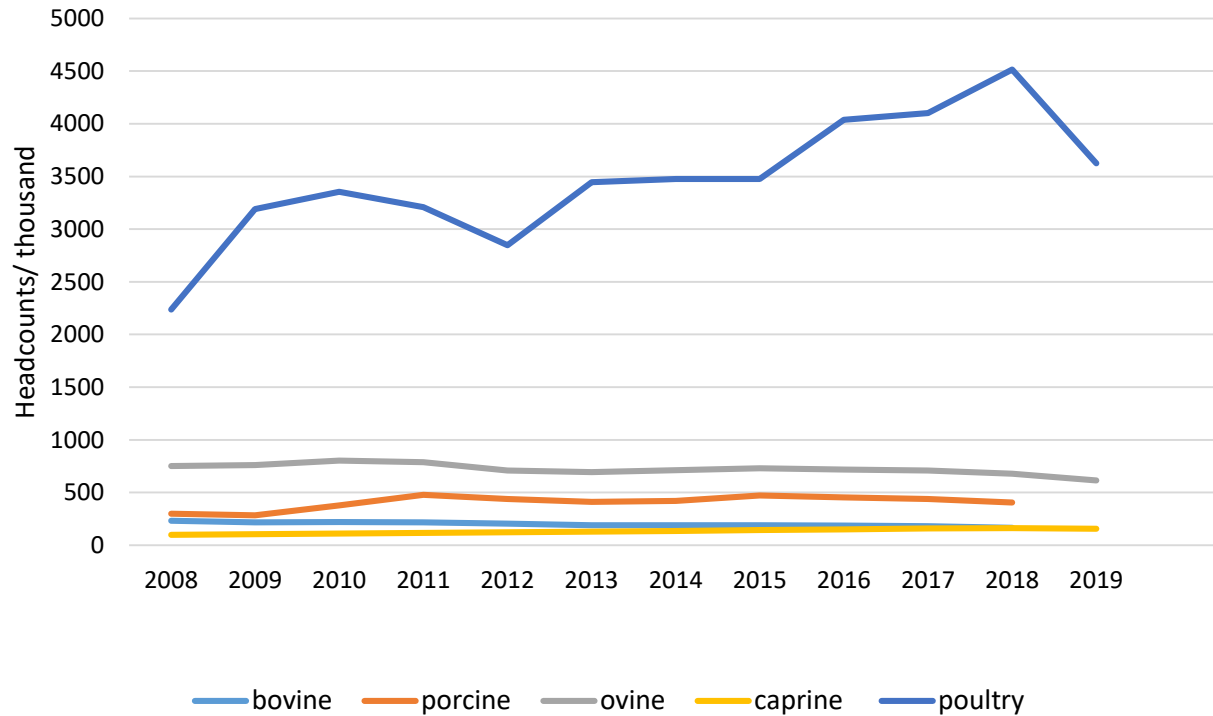
# Structure of local production

- Grains & cereals – 30%
- Fruits, grapes, nuts and vegetables – 24%
- Industrial crops – 18%
- Cattle and poultry (industrial) – 16%
- Milk – 8%
- Others – 4%

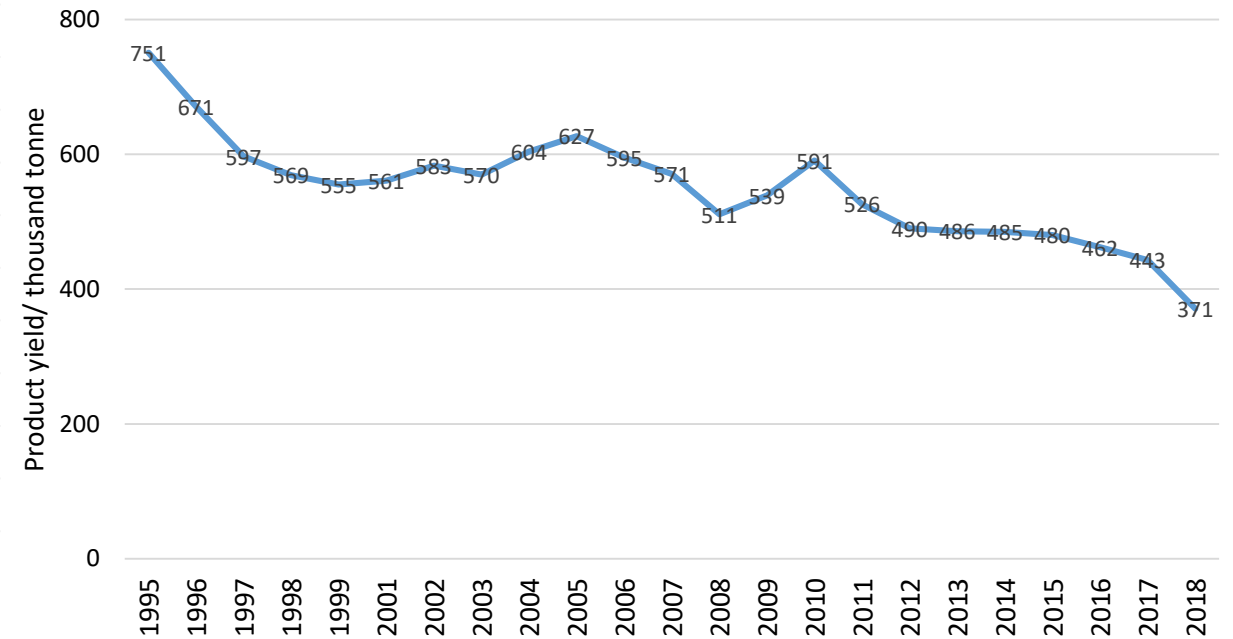


# Livestock sector

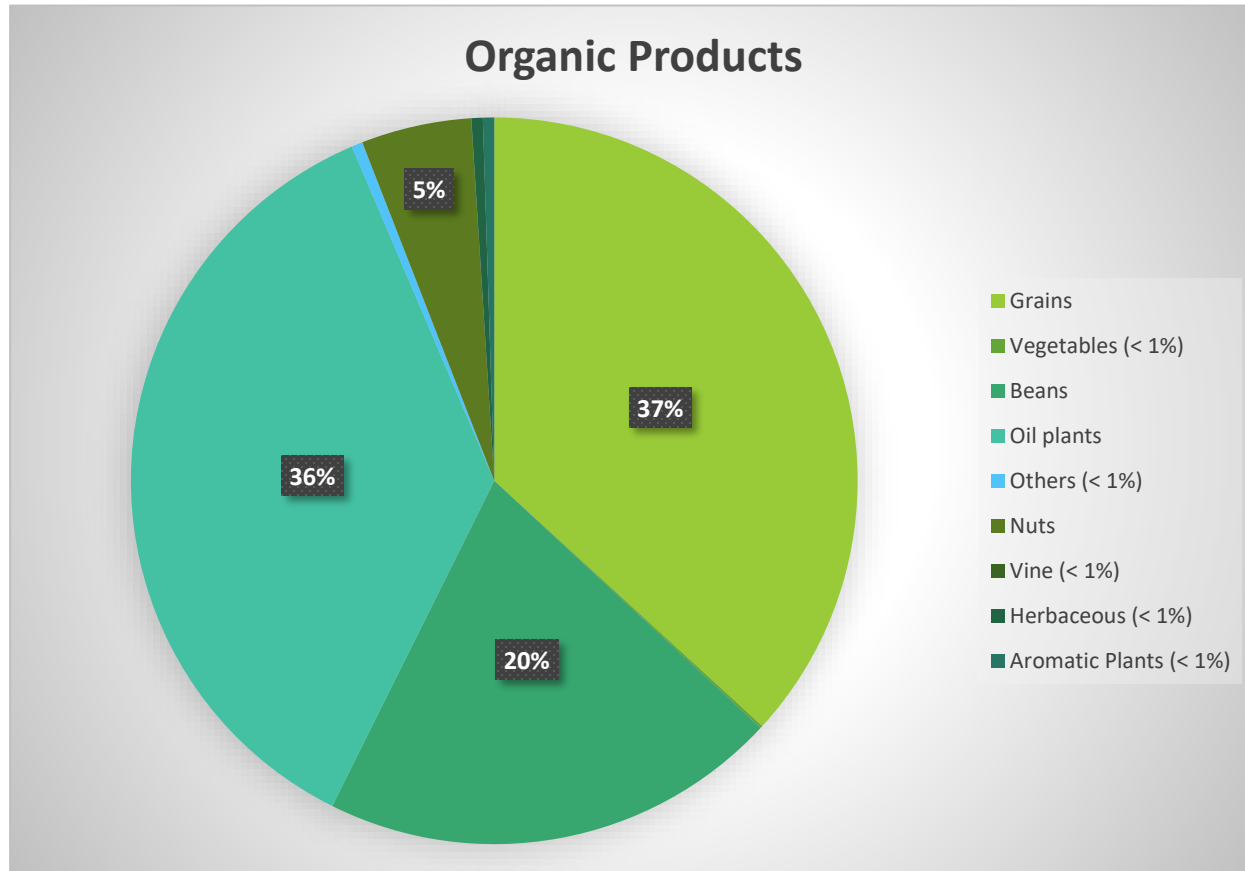
## Overall population of cattle and poultry



## Overall production of milk and dairy products



# Organic Agriculture



# National Fund for Agricultural and Rural Development

## Measure 1

Increasing the competitiveness of the agro-industrial sector by restructuring and adopting UE standards.

## Measure 2

Investments in the processing and marketing of agricultural products.

## Measure 3

Ensuring sustainable management of natural resources.

## Measure 4.

Improvement and development of rural infrastructure.

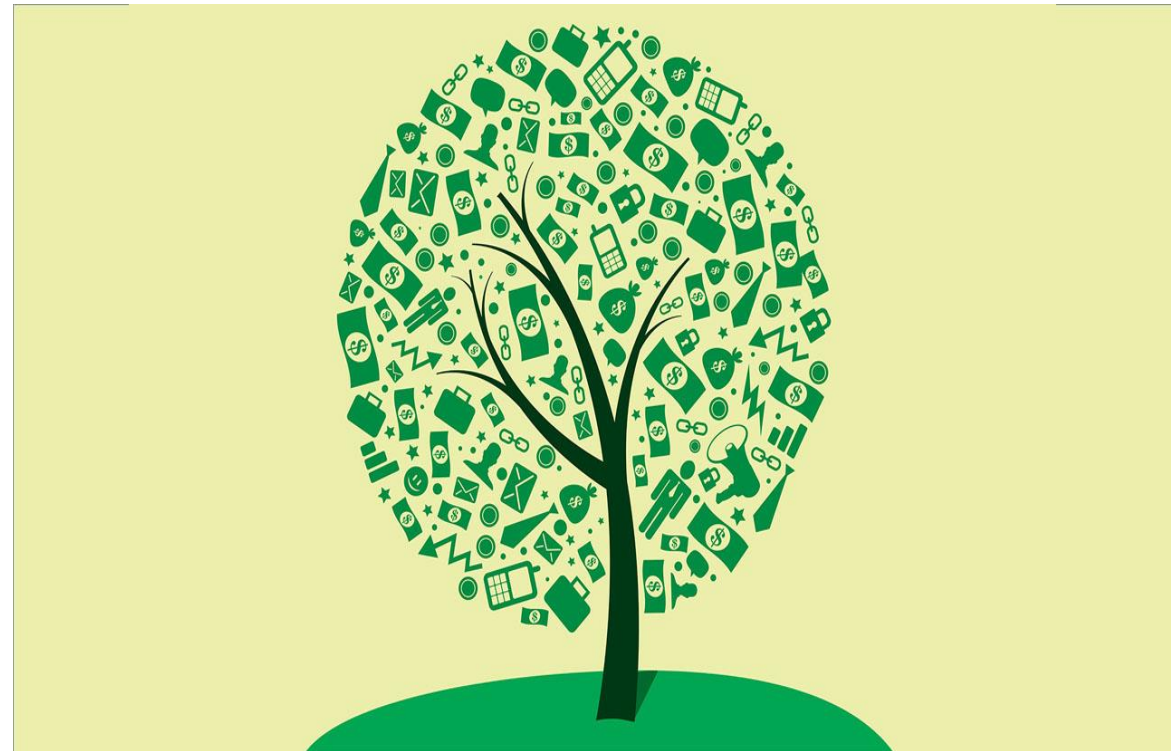
## Measure 5

Consulting and training service.

# Favorable investment climate

## Trade Policy

- DCFTA
- FTA
- CIS
- WTO



# Outlook

---

- **Increasing the profitability of agricultural production and reduction of the adverse climatic conditions via improved irrigation and fertilization process;**
- **Safe and traceable agri-food products;**
- **Continuous assessment and monitoring of international standards in the field of animal health, astonishment and slaughter of animals, transport of animals and related operations for farm animals;**
- **Enhancement of the competitiveness of the local products by means of subsidization and fiscal incentives e.g. doubling of the subsidy funding, reduction of the VAT rate and establishment of an overall tax with respect to the value chain;**



# The activities of Profile Associations

---

- **Promotion and protection of the rights of employers in the agri-food industry;**
- **Accounting advisory assistance including LEGALL, FISCAL, and SOCIAL branches;**
- **Development of technologies for both domestic and foreign markets aiming high quality products;**
- **Performing activity in the field of producer and processor cooperation;**
- **Assisting activities for start-ups;**
- **Provide a business-based network with the Est and West Associations;**
- **Implementation, evaluation and monitoring of national and international projects for accounting the economic potentials of producing and processing industry.**

**Carolina LINTE**

**Republic of Moldova**

**Chișinău , str. Muncești,121A**

**Tel+37368090046**

**[Asociatiapatronala\\_lapte@mail.ru](mailto:Asociatiapatronala_lapte@mail.ru)**

**[Patronatcarne016@gmail.com](mailto:Patronatcarne016@gmail.com)**

